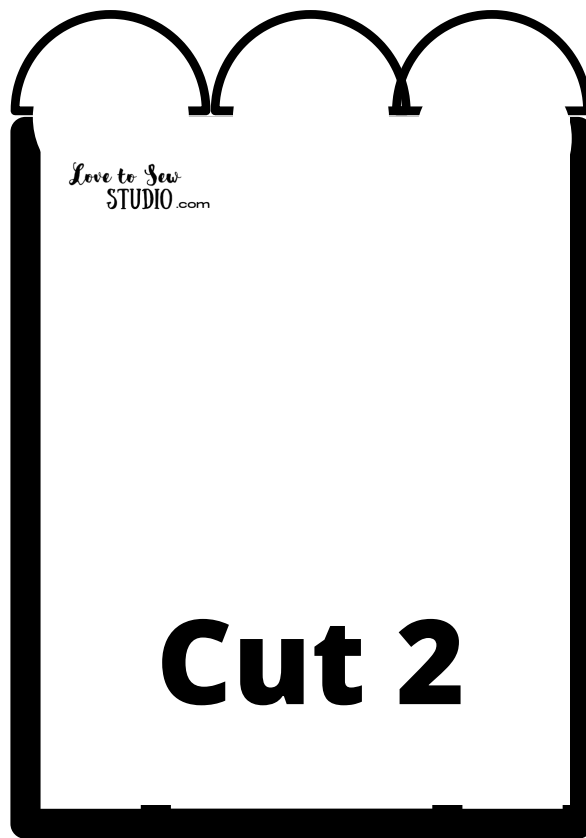


A large, stylized outline of a turkey, intended as a pattern for cutting. The turkey is facing right. It has a large, rounded head with a small triangle on top representing a comb. The neck is a simple horizontal line. The body is a large, rounded shape with a small notch on the right side. The tail is a large, rounded shape with a small notch on the right side. The legs are two simple horizontal lines. The entire pattern is enclosed in a thick black border.

Love to Sew  
STUDIO.com

**Proud Rustic  
Thanksgiving  
Turkey Pattern**

**Cut 2**



**Proud Rustic  
Thanksgiving  
Turkey Pattern**